



PRODUCT ADVANTAGE

MIRATECH'S MN/MBA is built for easy installation and low cost, low-maintenance performance. MiraNOx MN and MBA catalytic converter housings are used anywhere non-selective catalyst reduction is required: gas compression, power generation, water and liquids pumping, irrigation systems, chillers and more. The 10-year MiraNOx track record is your assurance of continuous, cost-effective compliance.

FEATURES AND BENEFITS

Continuous Compliance

It's been a MIRATECH trademark for years. The major benefit? We deliver the most cost-effective means to avoid non-compliance fines. For many customers, MiraNOx MN and MBA catalyst housings are the answer in reliable, cost-effective emissions control.

MIRATECH developed these top-quality catalyst housings specifically for stationary natural gas, LPG and diesel engines in the 50 to 400 hp range. We designed them with one goal in mind: maximum performance at minimum cost. Hundreds of satisfied customers agree: MiraNOx delivers.



▶▶ The MN/MB A Hallmark
High-Strength, High-Durability 304 SS Construction

WHY MIRATECH?

- ▶▶ Advanced Technology
- ▶▶ Cost-Effective, Comprehensive Solutions
- ▶▶ Unsurpassed Experience & Expertise
- ▶▶ Fast, Responsive, Customer-Focused Service & Support
 - Prevent Non-Compliance Fines
 - Improve Engine & Catalyst Performance
 - Cut Maintenance Costs
 - Maximize Catalyst Life

INDUSTRY SOLUTIONS

- ▶▶ Gas Compression
- ▶▶ Power Generation
- ▶▶ Rail
- ▶▶ Marine
- ▶▶ Water Pumping
- ▶▶ Air Compression
- ▶▶ Drilling Rigs

Contact MIRATECH

To learn more about MIRATECH emissions solutions, simply call us at 1.800.640.3141; email us at info@miratechcorp.com or visit our website at www.miratechcorp.com.

MN/MBA Catalyst Housings

» Standard MN
No-Maintenance

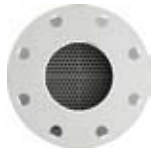


» MBA (Mid-Body Access)
Easy Access For Catalyst Maintenance



» 2 BASIC DESIGN OPTIONS

» 3 CONNECTION OPTIONS



» Flanged



» Threaded



» Unthreaded

Maximum Value Minimum Cost

MiraNOx housings come in two basic designs: the standard, no-maintenance MN configuration and the newer Mid-Body Access (MBA), which allows easy catalyst element maintenance and replacement.

Both designs give you three connection-options to choose from: **threaded, flanged or unthreaded pipe ends.**

Each unit features durable, non-corroding 304 stainless steel construction – making the MN/MBA well suited to extreme temperatures and harsh operating conditions.

MN/MBA housings are available in seven sizes for engines in the 50 – 400 hp range, with your choice of 3-Way, Oxidation or Diesel Oxidation catalyst elements. All MIRATECH catalyst

elements deliver higher mechanical strength and thermal durability, thanks to our patented banded and pinned monolith construction. And chemisorption catalyst impregnation yields high-action, poison-resistant catalysts at minimum cost.

MN/MBA housings also feature conical transitions and perforated diffusion panels for even exhaust flow, lower backpressure, and full use of the catalyst you've paid for. Threaded couplings allow fast, easy instrumentation hookups: twin 1/4" NPT half-couplings for pre-catalyst thermocouples and an 18mm half-coupling for a postcatalyst oxygen sensor.

CONTACT MIRATECH

To learn more about MIRATECH emissions solutions, simply call us at 1.800.640.3141; email us at info@miratechcorp.com or visit our website at www.miratechcorp.com.

WHY MIRATECH'S MN/MBA?

Easy, Cost-Effective
Continuous Compliance

- » Better Value
- » Less Maintenance
- » Lower Operating Cost

APPLICATIONS

- » Rich-Burn Or Lean-Burn Engines
- » Natural Gas, LPG Or Diesel
- » 50 - 400 HP
 - Gas Compression
 - Power Generation
 - Air Compression
 - Liquid/Petroleum Pumping
 - Chillers
- » Non-Selective Catalytic Reduction
 - 3-Way, Oxidation, HAPS Or Diesel Oxidation Catalysts

SUMMARY OF FEATURES & BENEFITS

- » Two Basic Designs To Choose From
 - Standard No-Maintenance MN or MBA: Mid-Body Access
 - Easy Access For Catalyst Maintenance & Replacement
- » High Strength, High Durability
 - 304 SS Metal Outer Shell
 - Patented Banded & Pinned Metal Monolith Catalyst Elements (U.S. Pat. #4,471,082 & #5,055,275)
- » High-Action, Poison-Resistant Catalyst
 - Chemisorption Catalyst Impregnation
- » Three Connection Options: Threaded, Flanged Or Unthreaded Pipe
- » Fast, Easy Instrumentation Hookups
 - Two 1/4" NPT Half-Couplings For Pre-Catalyst Thermocouples
 - 18mm Half-Coupling For Post Catalyst Oxygen Sensor
- » Even Flow, Low Back-Pressure, Full Catalyst Use
 - Conical Transition; Perforated Plate Diffusers